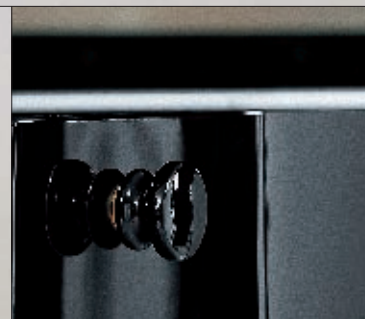


220 Omega

*The concert grand with extension register****

polished black



Height: 102.5 cm, 3'4"
Width: 154 cm, 5'0"
Depth: 220 cm, 7'3"
Weight: 385 kg, 849 lbs

* Utility patent no. 29520529.6

** Patent no. 19506971

*** Utility patent no. 29500460.6

This concert grand can be described as dynamic and powerful, yet sensitive and charming. The sound board, which is made of finest mountain spruce, provides for wonderfully rich variations in tone. Omega offers sensitive ways of expression, thanks to its soft and light response during play.

Specially selected hammerheads, intonated by expert hand, are full of dynamic and allow finest shades in tone and brilliant sound colours.

Key features: black keys are made of ebony. Large double brass castors with polyamines coating and stop brake. Sostenuuto pedal (sustaining pedal). Lid prop made of solid maple for greater brightness of sound. Hydraulic fall damper*. User friendly music stand** with convenient 'single-handed' operation, for extra reliability and comfort whilst playing. Extension register*** for contemporary compositions.



*The concert grand with extension register****

220 Omega

When playing the concert grand, contemporary compositions will often dictate to the pianist the various strings that need direct accessibility when playing, as well as purely striking the keys. This is why SAUTER has developed an extension register*** for the Omega 220. Coloured register lines mark the position of the partial tones, providing the ability to immediately find the relevant positions on a string. This allows for a rapid change between keys and strings. To make orientation between the numerous strings easier, we additionally insert dampers, which are marked according to the keys, be it either black or white.



Extension register



polished burl walnut



polished pyramid mahogany